

# How to Evaluate When It's Time to Upgrade from Non-IT Employee Support to a Managed Service Provider: A Practical Guide

Many small and mid-sized businesses begin by assigning IT responsibilities to a capable internal employee. At first, this feels efficient and cost-effective. Over time, however, as systems grow more complex and cybersecurity risks increase, informal IT management can create operational strain and hidden exposure.

This guide explains why upgrading to a Managed Service Provider can be critical for growing Bay Area businesses, how to assess your internal setup on your own, and how IT Total Care provides structured, proactive IT management aligned with your business goals.

## 1. Why Upgrading to a Managed Service Provider Matters for Bay Area SMBs

As your company grows, technology becomes central to productivity, security, compliance, and customer trust. Relying on non-IT employee support may have worked in the early stages, but it often lacks the depth and coverage required for sustained growth.

### Why It Matters for Bay Area SMBs:

- **No Reliable Backup in Emergencies:** When systems crash or cybersecurity threats hit, there is often no structured response plan or escalation path.
- **Single Point of Failure:** If your internal IT contact is unavailable, critical systems, vendor relationships, and passwords can become bottlenecks.
- **Increasing Technical Complexity:** Cloud platforms, remote work tools, compliance requirements, and cybersecurity protections require specialized expertise and ongoing oversight.
- **Cybersecurity Exposure:** 24/7 monitoring, proactive patching, and layered defenses are no longer optional in today's threat environment.
- **Lack of Strategic IT Planning:** Without a formal IT strategy, businesses face unpredictable costs, delayed projects, and technology decisions that do not align with long-term growth.

## 2. How to Evaluate Your IT Setup Yourself

If you are assessing whether it is time to transition from non-IT employee support to a Managed Service Provider, you need to evaluate both daily operations and long-term planning. Below is a structured approach SMBs can follow:

### Step 1: Identify Operational Warning Signs

- Review recent downtime, recurring technical issues, and how many hours internal staff spend troubleshooting instead of focusing on their primary role.

### Step 2: Assess Security and Compliance Coverage

- Confirm whether you have 24/7 monitoring, proactive patch management, documented cybersecurity policies, and protection that aligns with regulatory or cyber insurance requirements.

### Step 3: Evaluate Responsiveness and Accountability

- Determine who is responsible for resolving alerts, coordinating vendors, managing backups, and maintaining documentation. Delays or unclear ownership create risk.

### Step 4: Define Your 12 to 36 Month Growth Plans

- Consider expansion plans, additional staff, new office locations, increased cloud adoption, automation tools, or AI integration. Evaluate whether your current setup can support that growth.

### Step 5: Calculate the True Cost of Current IT

- Account for hardware refresh cycles, software subscriptions, lost productivity from downtime, delayed projects, and potential security incidents. Compare reactive costs to a predictable managed services model.

**Limitations:** Handling IT internally without dedicated expertise often leads to inconsistent monitoring, reactive security practices, and gaps in documentation that can expose your business to long-term operational and financial risk.

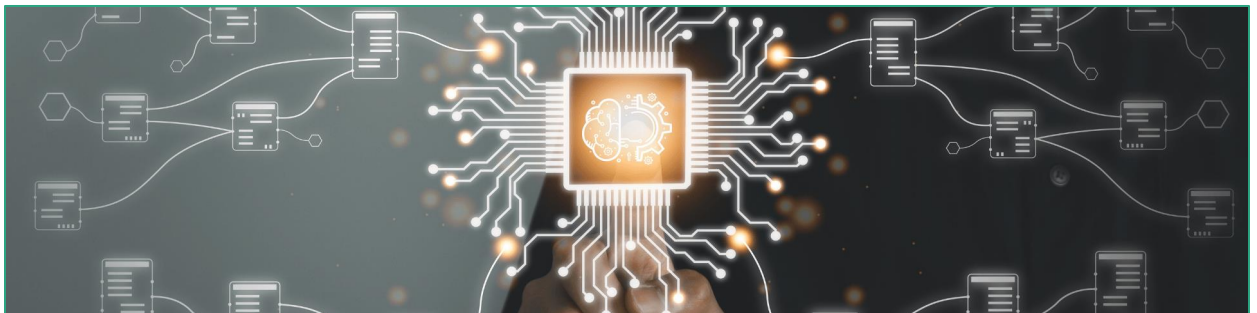


### 3. How IT Total Care Manages the Transition to a Managed Service Model

As a Bay Area Managed Service Provider, IT Total Care ensures that your technology environment is not only supported, but strategically aligned with your business objectives.

#### Our Managed IT Transition Process Includes:

- **Free Discovery Call:** We evaluate your current IT maturity, internal support structure, pain points, cybersecurity posture, and future growth plans.
- **Free Onsite Assessment:** Our team documents hardware, software, network infrastructure, backup systems, and processes to understand how your environment operates today.
- **Straightforward Recommendation:** We provide a clear, honest assessment of whether now is the right time to transition from non-IT employee support to a managed services model.
- **Custom Transition Plan:** If a transition makes sense, we outline exactly how IT operations will shift, what will be prioritized first, and how continuity will be maintained.
- **Flat-Rate Quote and Onboarding Roadmap:** You receive transparent pricing, a defined onboarding timeline, and clarity on how our team becomes your proactive IT partner from day one.



Upgrading to a Managed Service Provider is not about replacing a helpful employee. It is about strengthening security, improving reliability, creating predictable IT budgeting, and ensuring technology actively supports business growth.

#### Ready to Strengthen Your IT Strategy?

At **IT Total Care**, we partner with small and mid-sized businesses across the San Francisco Bay Area to deliver proactive IT support, 24/7 monitoring, cybersecurity protection, and strategic IT planning. Focus on growing your business with confidence, knowing your technology is professionally managed and aligned with your future goals.